

# How Thriving Kids will work

Thriving Kids is a new national approach to help children aged 8 and under with developmental delay or autism who have low to moderate support needs, and their families and carers to get support earlier.

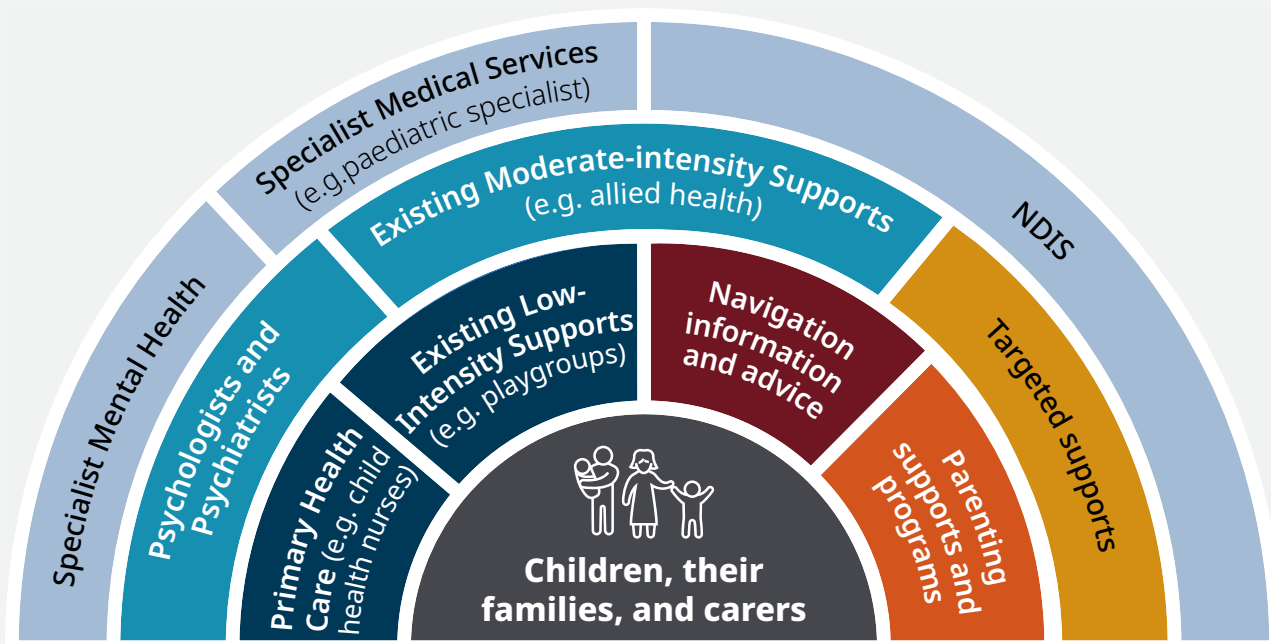
Tasmania is now working out how this approach should work here, and what Thriving Kids should look like for Tasmanian children, families and communities. The aim is to make sure Thriving Kids fits the needs of Tasmanians and works well across different parts of the state.

## Tasmania's Thriving Kids approach

Thriving Kids puts children, families, carers and kin at the centre of a broad support system.

Children, families, carers and kin can access different supports, including universal, low-intensity supports like playgroups and child health nurses. For children who need them, there are specialist services like psychiatrists.

Thriving Kids services will work alongside health, education, community services and the National Disability Insurance Scheme (NDIS) to provide the right support at the right time.



High intensity supports	Moderate-intensity supports	Low-intensity and/or universally accessible supports	Children, their families, and carers are at the centre of the service ecosystem	<b>Thriving Kids</b>		

# Different types of Thriving Kids supports

Thriving Kids will include a mix of existing and new supports, including help to understand your child's development. These supports will include:

## Navigation, information and advice

Get information, advice and help to work out what support might suit a child and where to go next. For example: getting advice over the phone or accessing flash cards with parenting advice.

## Group supports for parents, carers and kin

Join group sessions that help parents and carers learn new skills, share ideas and feel more confident supporting their child. For example: parent workshops or peer support groups.

## Supported groups for children

Join supported group activities where children, families, carers and kin can play, learn and connect. For example: a supported playgroup for younger children, or an after-school or holiday group for school-aged children.

## Personalised family support

Get more individual help when a family needs extra support, including to build skills, manage change and connect with services. For example: working with one main support person who helps a family set goals and coordinates supports.

## Therapy supports

Get therapy support in the way that best suits a child's needs, either one-to-one or in a small group. For example: individual sessions to work on specific goals, or a small group focused on communication, movement or social skills.

We are looking at where these services could be provided in places where children live, learn and play.



The Tasmanian Government is talking with families, providers and communities about the Thriving Kids approach in Tasmania.

To have your say, please contact [thriving.kids@dpac.tas.gov.au](mailto:thriving.kids@dpac.tas.gov.au), or visit: <https://www.dpac.tas.gov.au/divisions/cpp/community-and-disability-services/thriving-kids>