

Burnie City Council

What is this profile?

This profile contains information and statistical data about the Burnie City Council (the Council) across five key areas: demography and population trends, council revenue, council expenditure, asset management and governance and human resource management. The information is by no means exhaustive, but it provides a snapshot of the Council across a number of key council functions and responsibilities.

Comparisons

The statistics include comparisons of the Council with other similar councils in Tasmania as well as similar councils from New South Wales. New South Wales was selected due to the readily available comprehensive data in a similar format to that presented in this profile. As it was important to compare like-for-like councils as much as possible, the classification system used to separate councils into relevant groups was based on the Australian Classification of Local Governments (ACLG). The ACLG is based on population size and density and is attached for reference at Appendix A.

The profile also includes graphics depicting how the Council has performed against a number of financial and asset management indicators.

Key aspects of Burnie City Council's Profile

1. Demography

- Burnie City's population is expected to continue to grow at a rate of 0.05% pa. for the next 10 years.
- By 2025, Burnie City is likely to have a higher proportion of 20 to 35 year old citizens and a lower proportion of 60 to 75 year old citizens compared to the State average.

2. Financial Management

- Burnie City has returned an operating deficit (average -\$1.36 million) for the last 3 successive years.
- Burnie City has decreased its cash reserves by 14.40% in the last 3 years and had a \$1.1 million decrease in net financial assets over the last 3 years and currently has a net financial liability of -\$0.255 million.
- In 2012-13, Burnie City derived approximately 18% of its revenue from grants and contributions, which is 5% below the average for councils in the US¹ class.

3. Asset Management

- Burnie City's road asset consumption ratio has been below the Auditor-General's (AG) benchmark² for the last 7 years indicating the Council's roads will require increased investment in its roads.
- The Council has underinvested in existing assets for the last 4 consecutive years with its asset sustainability ratio being below the AG's benchmark.

4. Staff Efficiency

- In 2012-13, Burnie City had 9.28 FTE's³ per 1000 head of population which is above the average of 5.85 for US councils.
- Burnie City's employee costs were 38% of total operating expenses, which is above the US average of 34.40%.

5. Rates Performance

- Burnie City's average rates and charges have increased by 134% since 2010-11, which is 122% greater than the Council Cost Index of 11.58% for the same period. Note there was a significant increase in average rates in 2011-12 when average rates increased from \$920 in 2010-2011 to \$1,970 in 2011-12.

¹ Urban Small Councils as defined by the Australian Classification of Local Governments (ACLG).

² Auditor-General's Benchmarks are those used in the *Auditor-General's Report on the Financial Statements of State Entities*.

³ Full Time Equivalent staff

Burnie City Council

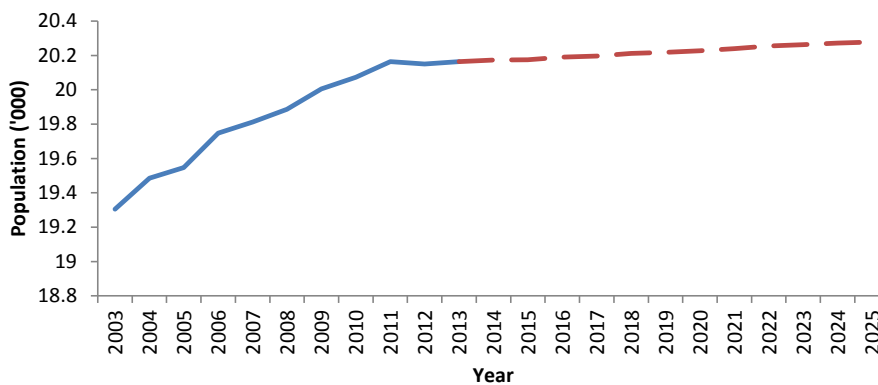
Classification: Urban Small (US)

DEMOGRAPHY AND MUNICIPAL STATISTICS

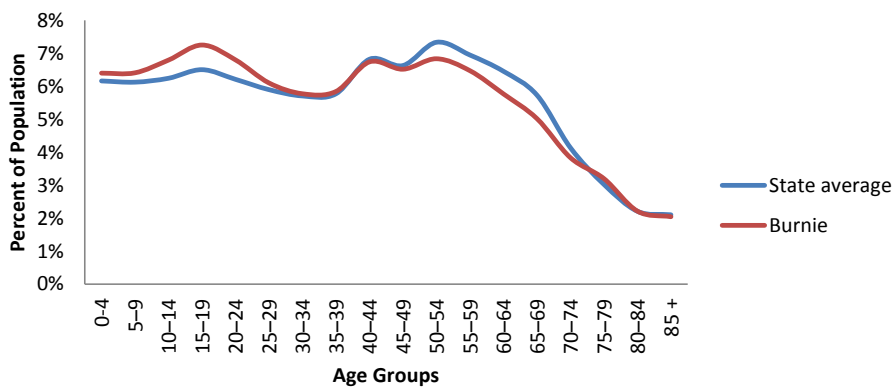
Burnie City Council (2012-13)

Municipal Area	610 km ²	Population (2012)	20,148
Roads (council owned) (km)	346	Population density (per km ²)	33.0
Rateable Properties	9675	Population growth per year (10 year Ave)	0.42 %
Rateable Residential properties	7974	Unemployment rate (per cent) (2011)	8.5 %
Main employment industry	Retail Trade (13.4%)	Median weekly household income (2011)	\$854

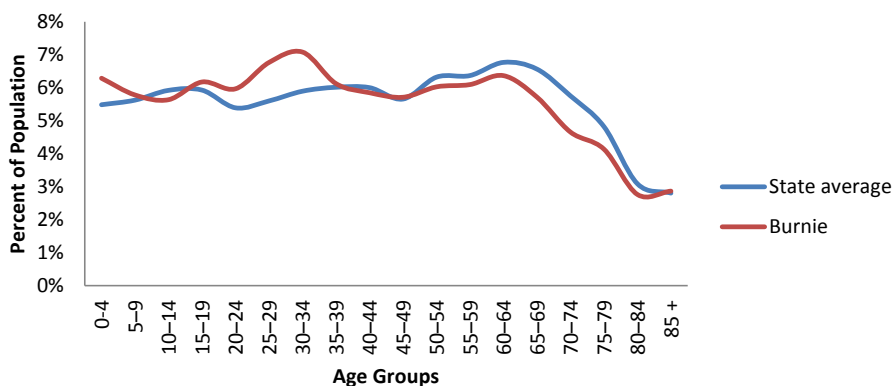
Population trajectory (Med Series)



2013 Age Profile



2025 Age Profile (medium series)

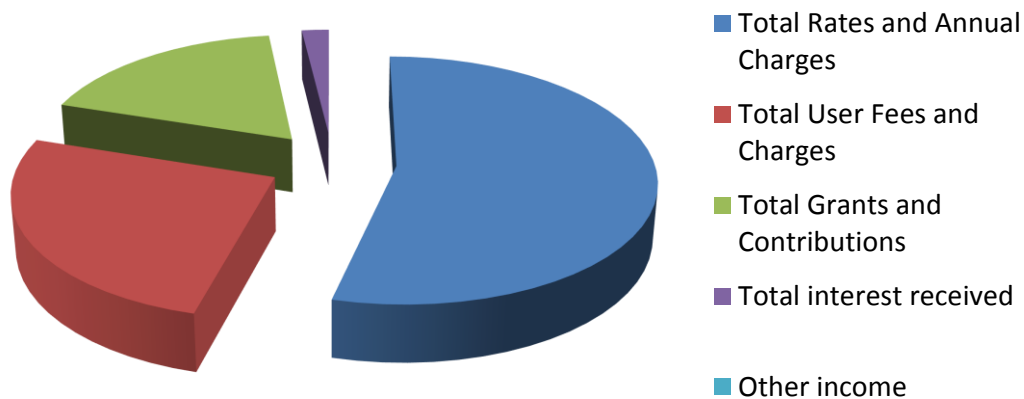


Burnie City Council

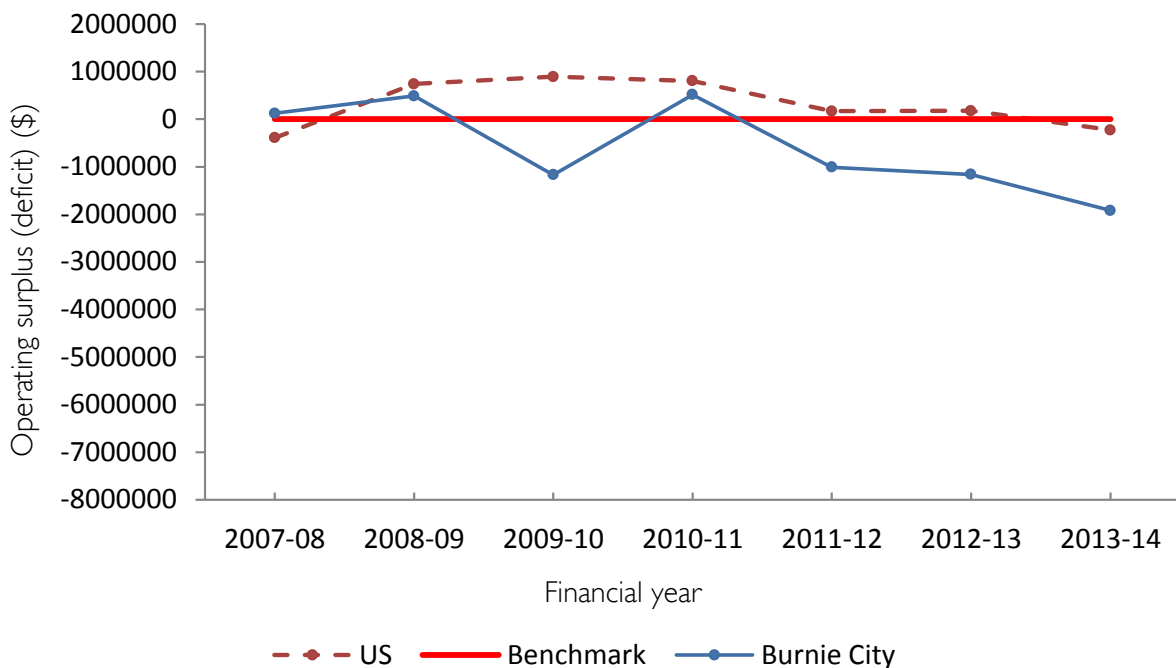
REVENUE AND RATES

Indicator/Statistic (2012-13)	Burnie	US Ave	State Ave	NSW US Ave
Total Revenue (\$'000s)	39,714	28,419	26,029	50,740
Own source revenue (%) ⁴	80.0	75.0	65.9	61.9
Grants and contributions revenue (%)	18.1	23.1	28.8	30.5
Average rates/charges per Valuation	\$2038	\$1510	\$1322	\$1092
Average residential rate	\$1451	\$1254	\$1037	\$788

Total Revenue



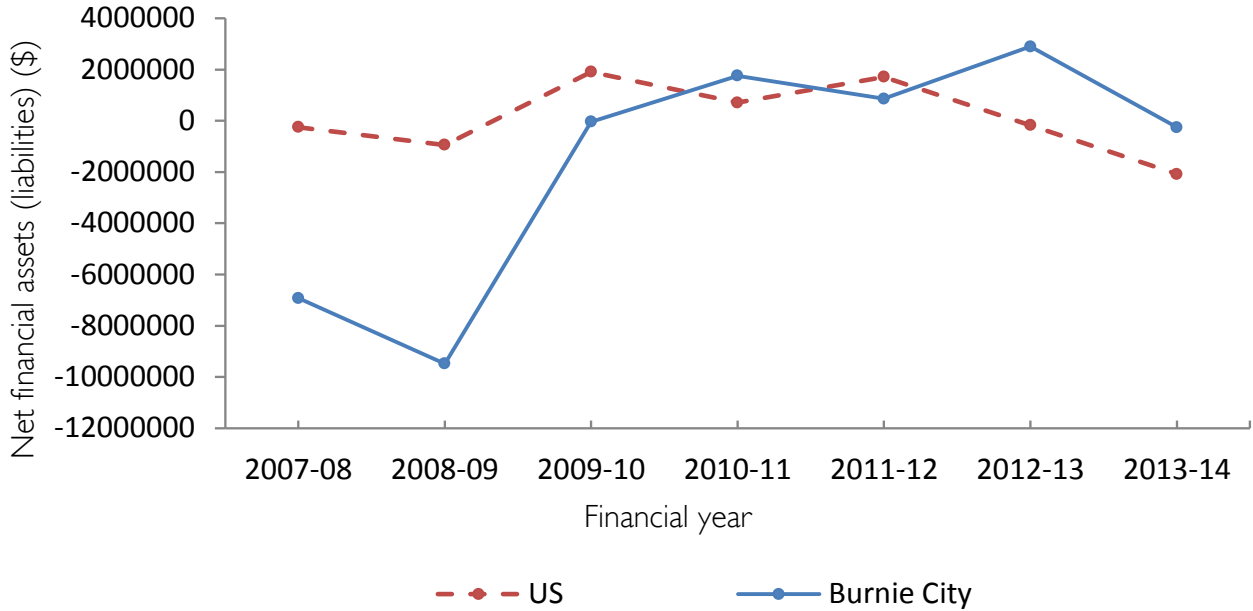
Operating Surplus (Deficit)



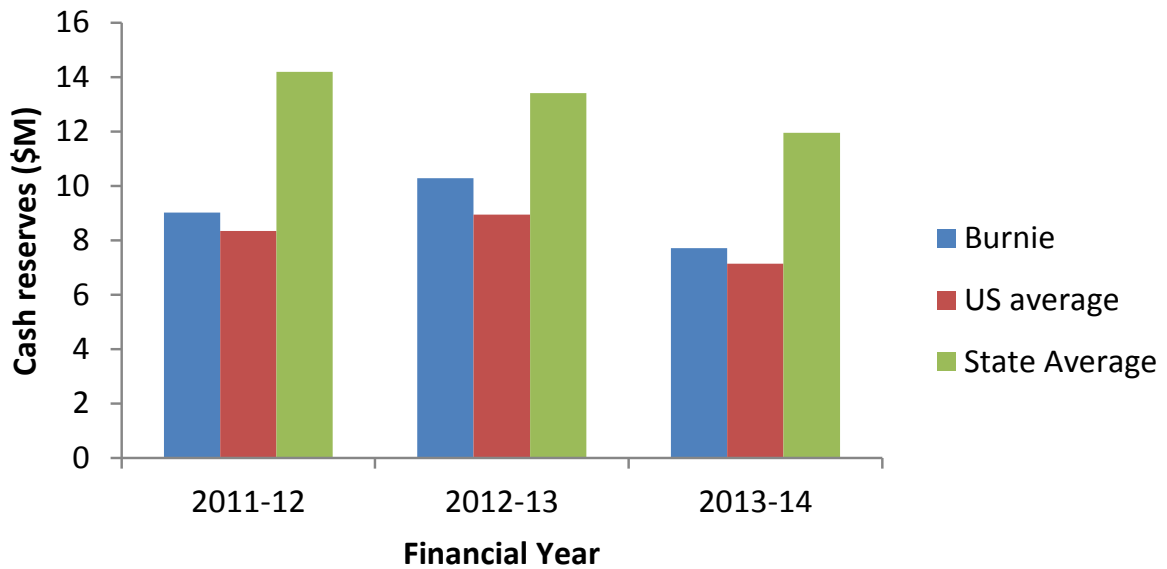
⁴ Own source revenue and grants and contributions revenue are based on total revenue

Burnie City Council

Net Financial Assets (Liabilities)



Cash Reserves



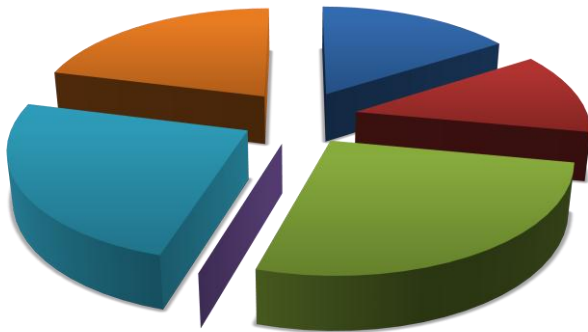
Burnie City Council

EXPENSES

Indicator/Statistic (2012-13)	Burnie	US Ave	State Ave	NSW US Ave
Total Expenditure (\$'000s)	38,317	25,762	25,166	46,767
Operating Cost per Valuation(\$)	3955	2499	2471	4338
Operating Expense per Capita (\$)	1899	1182	1756	2086

Operating Expenses by Council Function

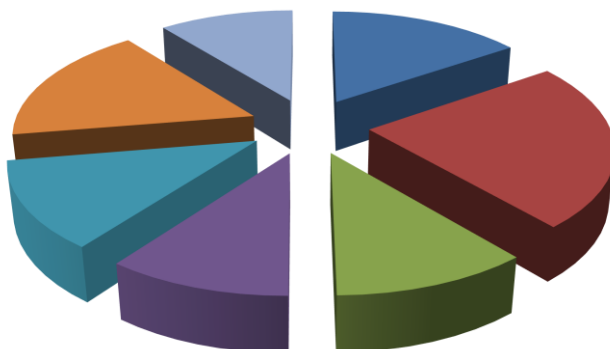
Burnie



Tasmanian US Average



NSW US Average



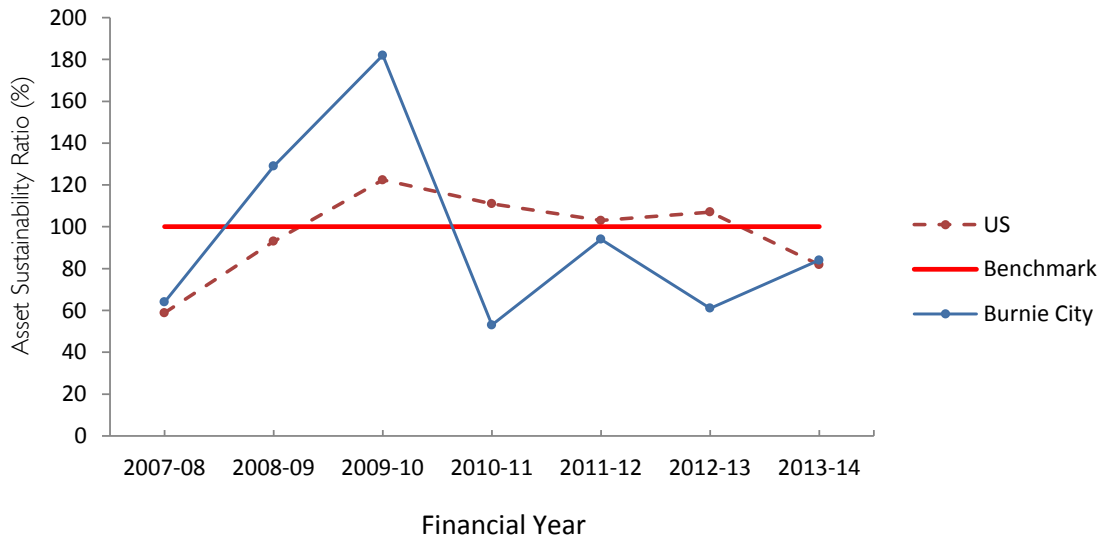
- Governance & Administration
- Public Order, Health & Safety
- Environmental
- Community Services, Education & Housing
- Recreational & Cultural
- Roads, Bridges & Footpaths
- Other Services

Burnie City Council

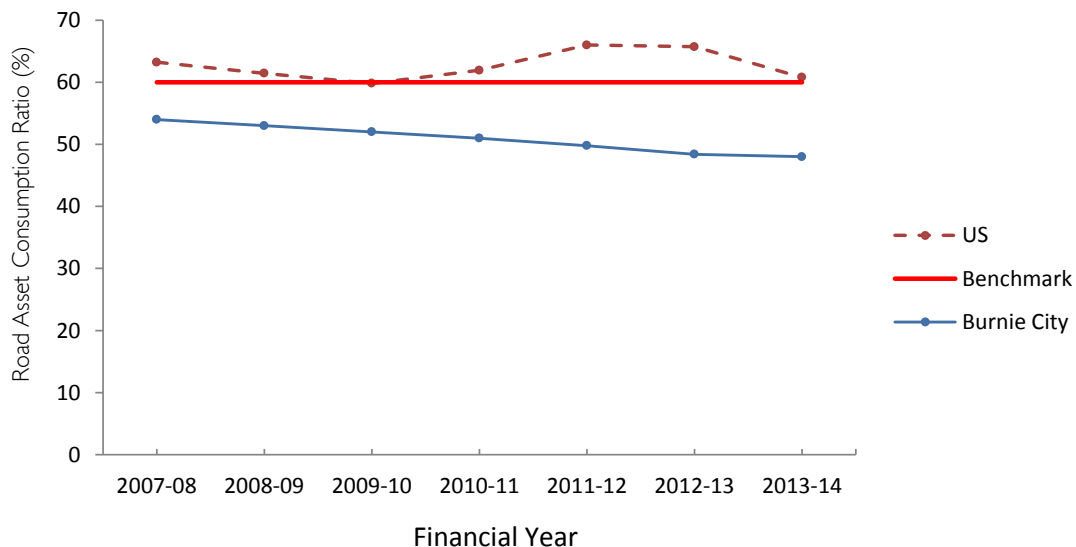
ASSET MANAGEMENT

Indicator/Statistic (2012-13)	Burnie	US Ave	State Ave
Non-current Assets (\$'000s)	349,979	337,311	297,287
Capital Expenditure (\$'000s)	6,756	9,692	7,658
Depreciation expenses (\$'000s)	7,996	6,052	5,300
Cap Ex to Depreciation ratio (%)	84.5	156.0	139.7

Asset Sustainability Ratio



Road Asset Consumption ratio



GOVERNANCE AND HUMAN RESOURCE MANAGEMENT

Indicator/Statistic (2012-13)	Burnie	US Ave	State Ave	NSW US Ave
No. Elected Members	9	10.2	9.69	9.18
Population Per Elected Members	2238	2108	1672	2447
FTE's	187	127	118	226
FTE Staff per 1000 population	9.28	5.85	8.36	10.13
Employee costs to Operating Expense (%)	38	34.4	33.2	NA

Burnie City Council

APPENDIX A

	Rural Agricultural Small and Medium	Rural Agricultural Large	Rural Agricultural Very Large	Urban Small	Urban Medium
Abbreviation	RASM	RAL	RAV	US	UM
Definition	population of up to 5 000 at a density of <30 per km ²	population of 5 000-10 000 at a density of <30 per km ²	population of 10 000-20000 at a density of <30 per km ²	population of up to 30 000	population of 30 000 – 70 000
Councils	Flinders Island King Island Central highlands Glamorgan-Spring Bay Tasman	Break O'Day Circular Head Dorset Southern Midlands Kentish Latrobe George Town West Coast	Derwent Valley Huon Valley Meander Valley Northern midlands Sorell Waratah-Wynyard	Brighton Burnie Devonport Central Coast West Tamar	Clarence Glenorchy Hobart Kingborough Launceston