

Meander Valley Council

What is this profile?

This profile contains information and statistical data about the Meander Valley Council (the Council) across five key areas: demography and population trends, council revenue, council expenditure, asset management and governance and human resource management. The information is by no means exhaustive, but it provides a snapshot of the Council across a number of key council functions and responsibilities.

Comparisons

The statistics include comparisons of the Council with other similar councils in Tasmania as well as similar councils from New South Wales. New South Wales was selected due to the readily available comprehensive data in a similar format to that presented in this profile. As it was important to compare like-for-like councils as much as possible, the classification system used to separate councils into relevant groups was based on the Australian Classification of Local Governments (ACLG). The ACLG is based on population size and density and is attached for reference at Appendix A.

The profile also includes graphics depicting how the Council has performed against a number of financial and asset management indicators.

Key aspects of Meander Valley Council's Profile

1. Demography
 - Meander Valley's population is expected to increase at a rate of 0.12% pa. for the next 10 years
 - By 2025, Meander Valley is likely to have a lower portion of 0 to 50 year old citizens and a higher portion of 55 to 80 year olds compared to the State average.
2. Financial Management
 - Meander Valley has returned an average operating surplus of \$0.720 million over the last 7 years.
 - Meander Valley has increased its cash reserves by 2.08% to \$20.275 million since 2011-12 and decreased its net financial assets by 3.00% to \$12.654 million in 2013-14.
 - In 2012-13, Meander Valley derived approximately 32.90% of its revenue from grants and contributions, which is 1.50% above the average for councils in the RAV¹ class.
3. Asset Management
 - Meander Valley's road asset consumption ratio has been well above the Auditor-General's (AG) benchmark² for the last 7 years.
 - The Council has been on average below the AG's benchmark by 12.40% for asset sustainability ratio over the last 7 years indicating that the council needs to invest more in its assets.
4. Staff Efficiency
 - In 2012-13, Meander Valley had 3.9 FTE's³ per 1000 head of population which is below the average of 5.71 for RAV councils.
 - Meander Valley's employee costs were 33% of total operating expenses, which is 2.70% below the RAV average of 35.70%.
5. Rates Performance
 - Meander Valley's average rates and charges have increased by 4.40% since 2010-11, which is 7.18% less than the Council Cost Index of 11.58% for the same period.

¹ Rural Agricultural Very Large Councils as defined by the Australian Classification of Local Governments (ACLG).

² Auditor-General's Benchmarks are those used in the *Auditor-General's Report on the Financial Statements of State Entities*.

³ Full Time Equivalent staff

Meander Valley Council

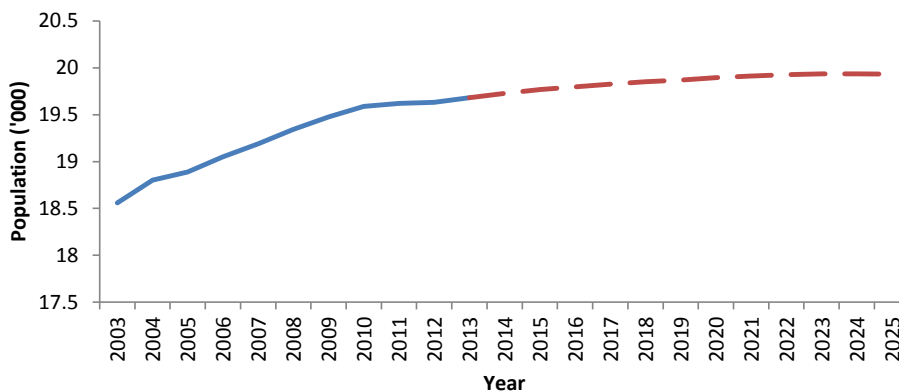
Classification: Rural Agricultural Very Large (RAV)

DEMOGRAPHY AND MUNICIPAL STATISTICS

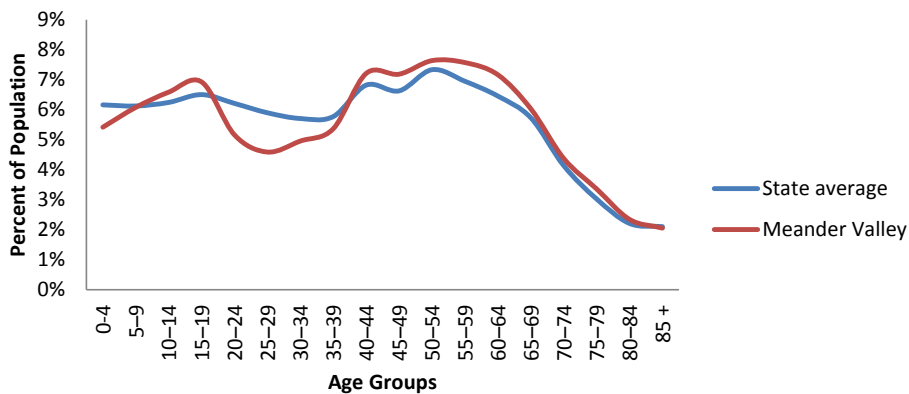
Meander Valley Council (2012-13)

Municipal Area	3,320 km ²	Population (2012)	19,633
Roads (council owned) (km)	855	Population density (per km ²)	5.9
Rateable Properties	9,684	Population growth per year (10 year Ave)	0.55 %
Rateable Residential properties	7,231	Unemployment rate (per cent) (2011)	5.0 %
Main employment industry	Retail Trade (11.8 %)	Median weekly household income (2011)	\$922

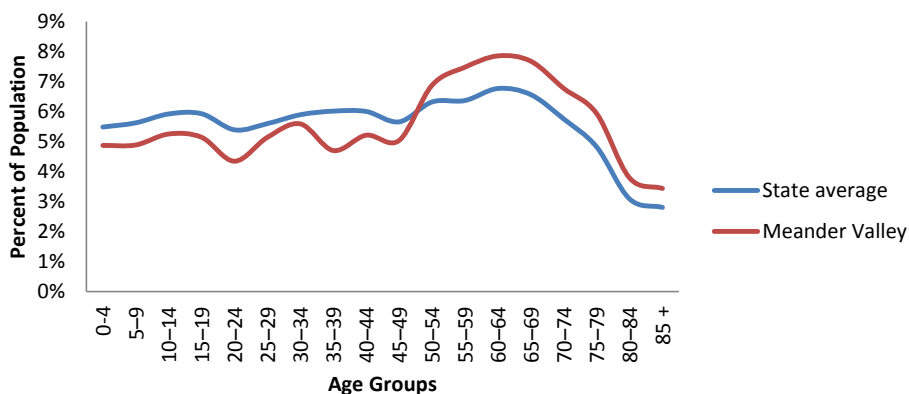
Population trajectory (Med Series)



2013 Age Profile



2025 Age Profile (medium series)

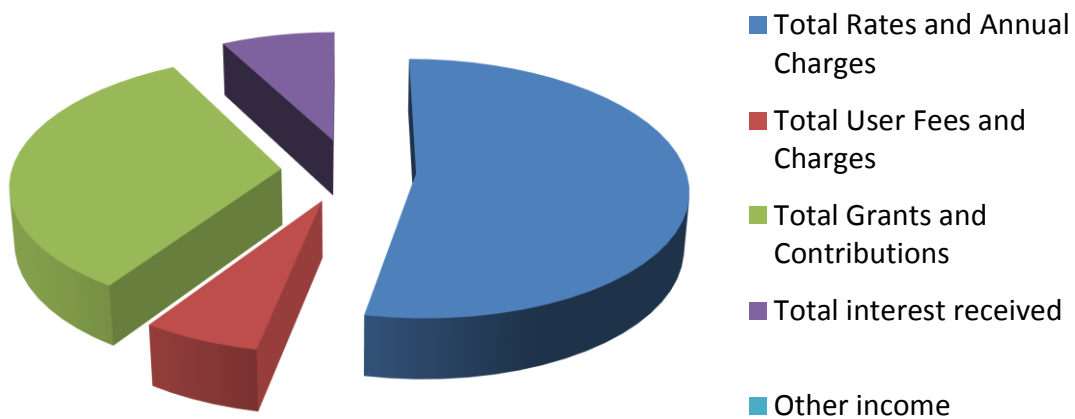


Meander Valley Council

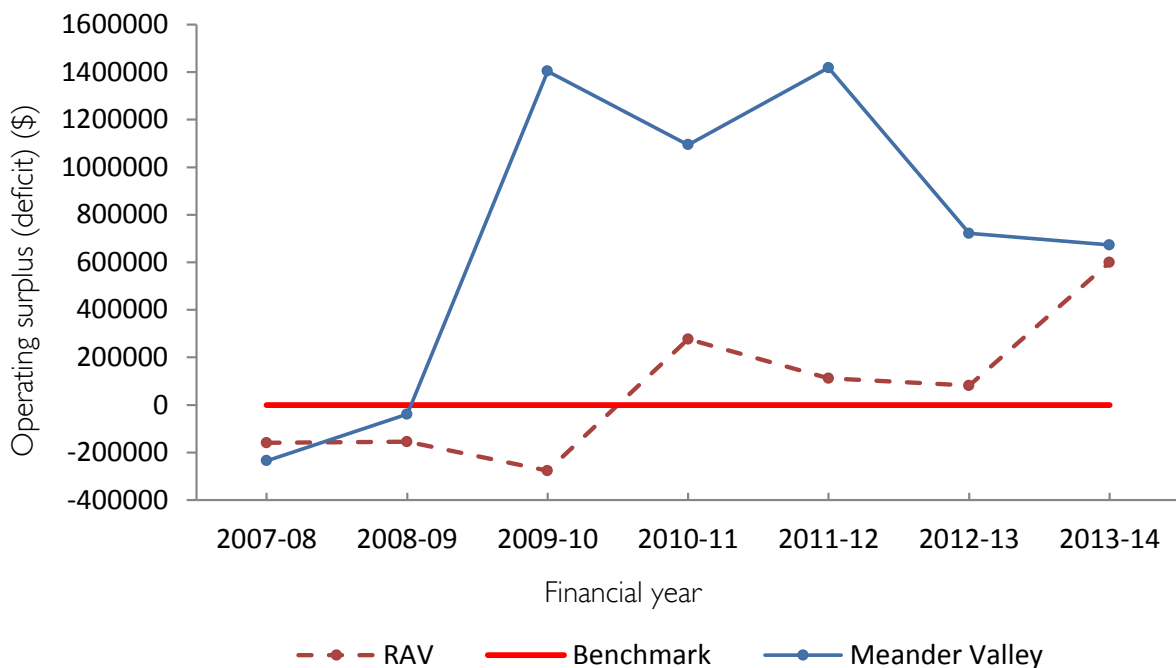
REVENUE AND RATES

Indicator/Statistic (2012-13)	Meander Valley	RAV Ave	State Ave	NSW RAV Ave
Total Revenue (\$'000s)	18,464	17,678	26,029	38,795
Own source revenue (%) ⁴	59.3	62.2	65.9	55.0
Grants & contributions revenue (%)	32.9	31.4	28.8	37.0
Average rates/charges per Valuation	\$982	\$1129	\$1322	\$1151
Average residential rate	\$855	\$1032	\$1037	\$643

Total Revenue



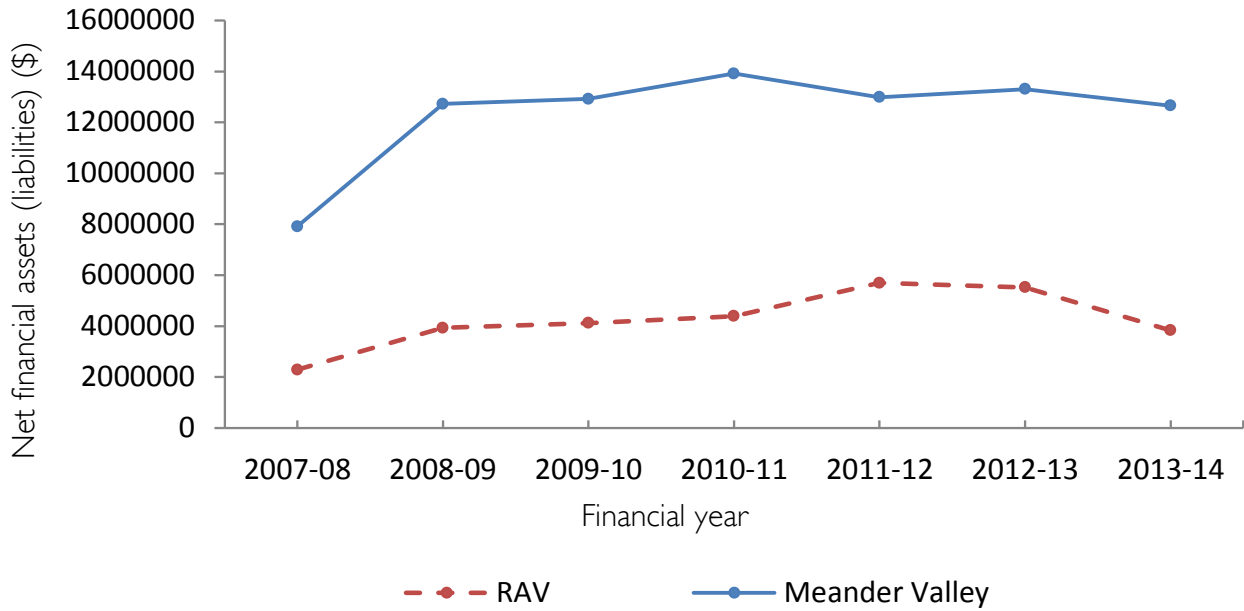
Operating Surplus (Deficit)



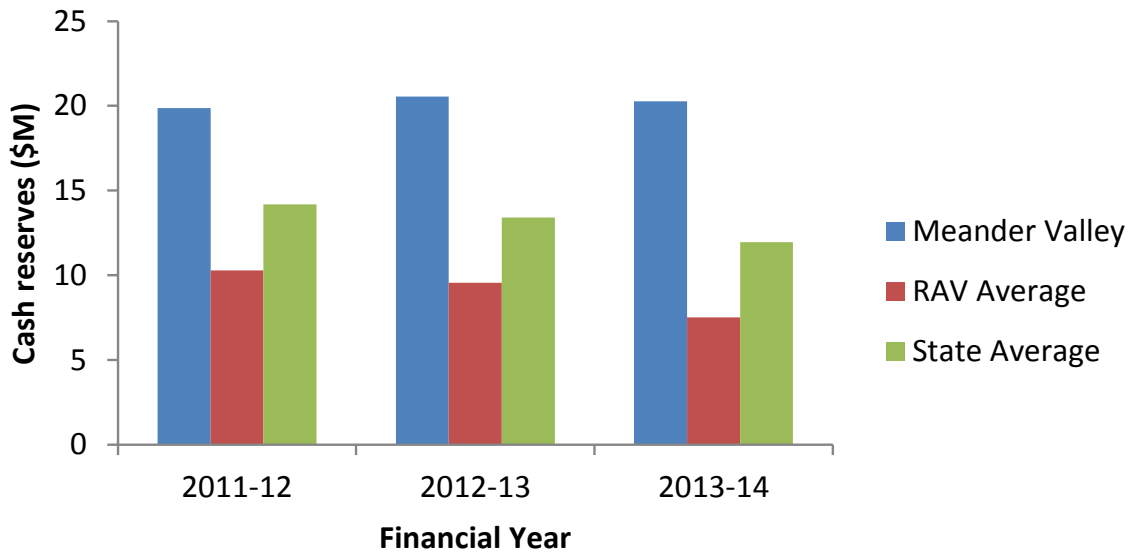
⁴ Own source revenue and grants and contributions revenue are based on total revenue

Meander Valley Council

Net Financial Assets (Liabilities)



Cash Reserves



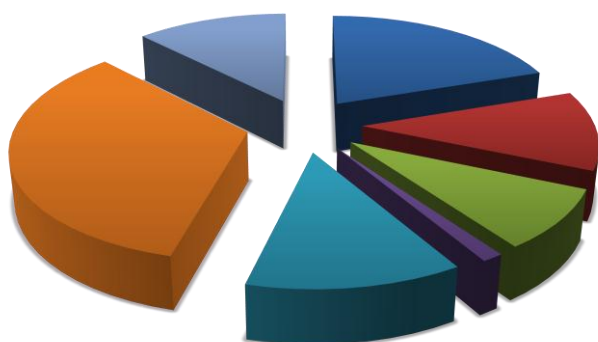
Meander Valley Council

EXPENSES

Indicator/Statistic (2012-13)	Meander Valley	RAV Ave	State Ave	NSW RAV Ave
Total Expenditure (\$'000s)	17,311	16,305	25,166	34,369
Operating Cost per Valuation (\$)	1743	2049	2471	5081
Operating Expense per Capita (\$)	859	1121	1756	2599

Operating Expenses by Council Function

Meander Valley



Tasmanian RAV Average



NSW RAV Average



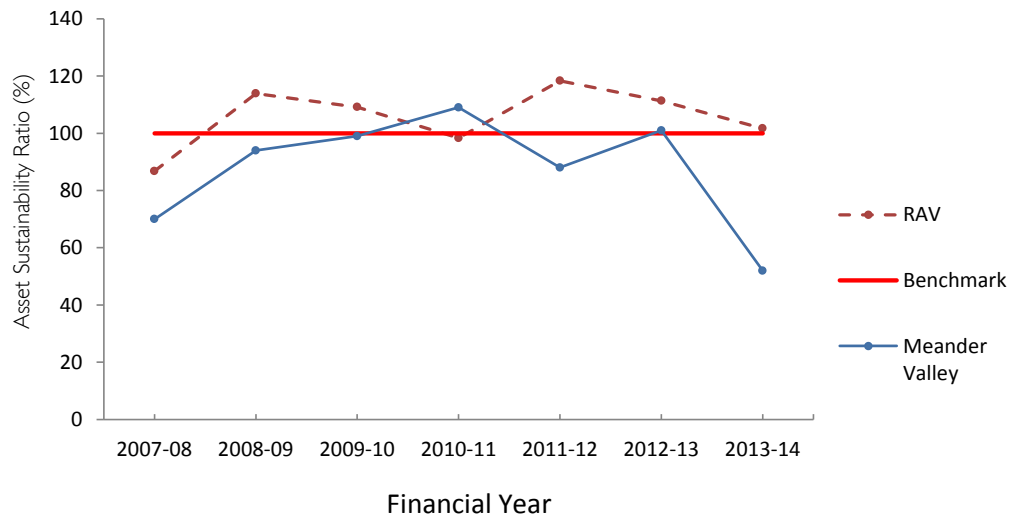
- Governance & Administration
- Public Order, Health & Safety
- Environmental
- Community Services, Education & Housing
- Recreational & Cultural
- Roads, Bridges & Footpaths
- Other Services

Meander Valley Council

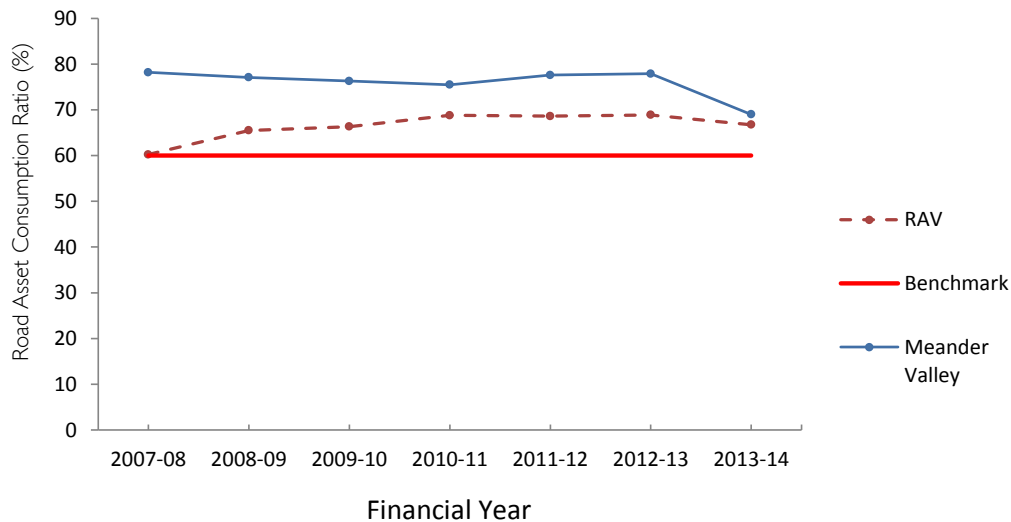
ASSET MANAGEMENT

Indicator/Statistic (2012-13)	Meander Valley	RAV Ave	State Ave
Non-current Assets (\$'000s)	265,345	203,519	297,287
Capital Expenditure (\$'000s)	5,105	6,080	7,658
Depreciation expenses (\$'000s)	4,708	3,921	5,300
Cap Ex to Depreciation ratio (%)	108.4	155.4	139.7

Asset Sustainability Ratio



Road Asset Consumption ratio



GOVERNANCE AND HUMAN RESOURCE MANAGEMENT

Indicator/Statistic (2012-13)	Meander Valley	RAV Ave	State Ave	NSW RAV Ave
No. Elected Members	9	9.17	9.69	9.3
Population Per Elected Members	2181	1567	1672	1467
FTE's	76	81	118	154
FTE Staff per 1000 population	3.9	5.71	8.36	11.74
Employee costs to Operating Expense (%)	33	35.7	33.2	NA

Meander Valley Council

APPENDIX A

	Rural Agricultural Small and Medium	Rural Agricultural Large	Rural Agricultural Very Large	Urban Small	Urban Medium
Abbreviation	RASM	RAL	RAV	US	UM
Definition	population of up to 5 000 at a density of <30 per km ²	population of 5 000-10 000 at a density of <30 per km ²	population of 10 000-20000 at a density of <30 per km ²	population of up to 30 000	population of 30 000 – 70 000
Councils	Flinders Island King Island Central highlands Glamorgan-Spring Bay Tasman	Break O'Day Circular Head Dorset Southern Midlands Kentish Latrobe George Town West Coast	Derwent Valley Huon Valley Meander Valley Northern midlands Sorell Waratah-Wynyard	Brighton Burnie Devonport Central Coast West Tamar	Clarence Glenorchy Hobart Kingborough Launceston