



# King Island Council

## What is this profile?

This profile contains information and statistical data about the King Island Council (the Council) across five key areas: demography and population trends, council revenue, council expenditure, asset management and governance and human resource management. The information is by no means exhaustive, but it provides a snapshot of the Council across a number of key council functions and responsibilities.

## Comparisons

The statistics include comparisons of the Council with other similar councils in Tasmania as well as similar councils from New South Wales. New South Wales was selected due to the readily available comprehensive data in a similar format to that presented in this profile. As it was important to compare like-for-like councils as much as possible, the classification system used to separate councils into relevant groups was based on the Australian Classification of Local Governments (ACLG). The ACLG is based on population size and density and is attached for reference at Appendix A.

The profile also includes graphics depicting how the Council has performed against a number of financial and asset management indicators.

## Key aspects of King Island Council's Profile

### 1. Demography

- King Island's population is expected to decrease at a rate of 0.83% pa. for the next 10 years.
- By 2025, King Island is likely to have a lower proportion of 0 to 40 year old citizens and a higher portion of 60 to 85 year olds compared to the State average.

### 2. Financial Management

- King Island has returned an operating deficit every year for the last 7 years at an average of -\$0.347 million.
- King Island has increased its cash reserves by 5.24% to \$4.589 million and has gone from a position of net financial liabilities of -\$0.540 million to a position of net financial assets of \$1.031 million over the last 3 years.
- In 2012-13, King Island derived approximately 38.30% of its revenue from grants and contributions, which is 3.50% above the average for councils in the RASM<sup>1</sup> class.

### 3. Asset Management

- King Island's road asset consumption ratio has on average been above the Auditor-General's (AG) benchmark<sup>2</sup> over the last 7 years indicating the Council's roads are in an appropriate condition.
- The Council has been on average 10.30% above the AG's benchmark for asset sustainability ratio over the last 7 years indicating that the council is maintaining its assets at an appropriate level.

### 4. Staff Efficiency

- In 2012-13, King Island had 21.26 FTE's<sup>3</sup> per 1000 head of population which is above the average of 16.81 for RASM councils.
- King Island's employee costs were 34% of total operating expenses, which is 6.20% above the RASM average of 27.80%.

### 5. Rates Performance

- King Island average rates and charges have increased by 11.21% since 2010-11, which is 0.37% less than the Council Cost Index of 11.58% for the same period.

<sup>1</sup> Rural Agricultural Small and Medium Councils as defined by the Australian Classification of Local Governments (ACLG).

<sup>2</sup> Auditor-General's Benchmarks are those used in the *Auditor-General's Report on the Financial Statements of State Entities*.

<sup>3</sup> Full Time Equivalent staff

# King Island Council

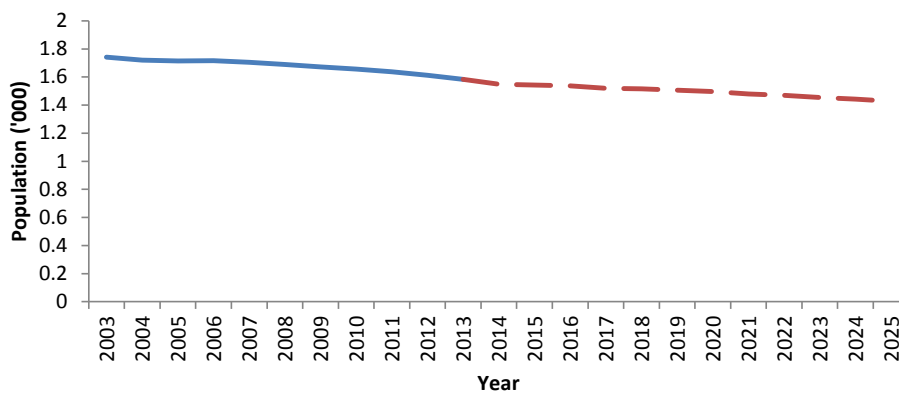
Classification: Rural Small and Medium (RASM)

## DEMOGRAPHY AND MUNICIPAL STATISTICS

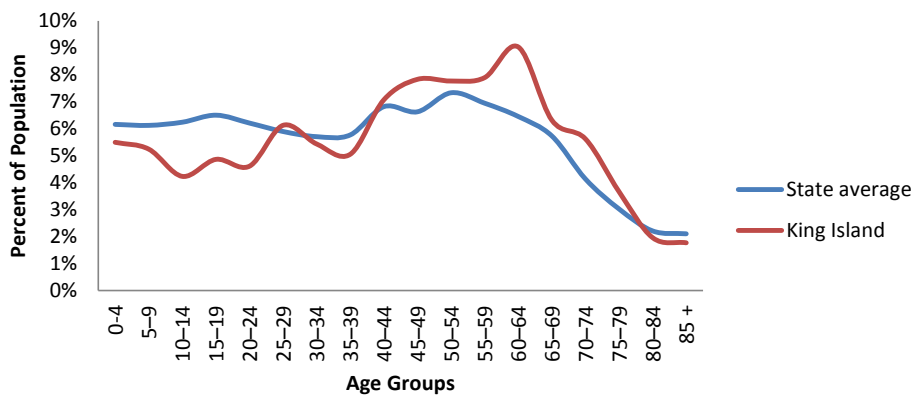
### King Island Council (2012-13)

Municipal Area	1,100 km <sup>2</sup>	Population (2012)	1,599	
Roads (council owned) (km)	433	Population density (per km <sup>2</sup> )	1.5	
Rateable Properties	1,578	Population growth per year (10 year Ave)	-0.79 %	
Rateable Residential properties	598	Unemployment rate (per cent) (2011)	3.1 %	
Main employment industry	Agriculture, Forestry and Fishing (25.9 %)		Median weekly household income (2011)	\$953

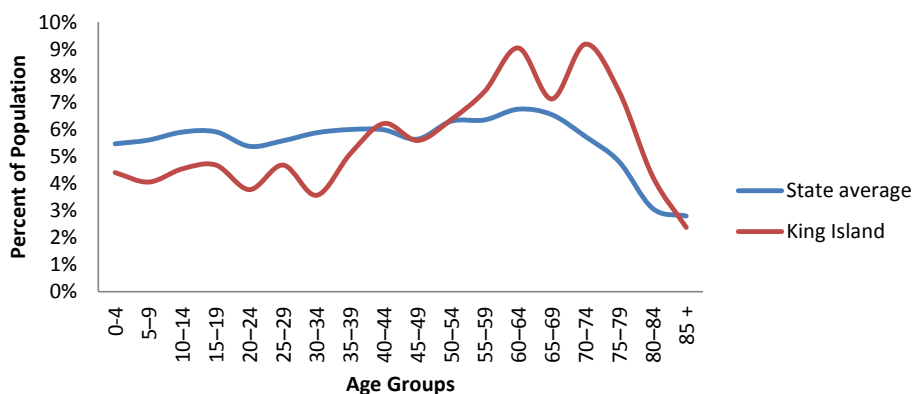
Population trajectory (Med Series)



2013 Age Profile



2025 Age Profile (medium series)

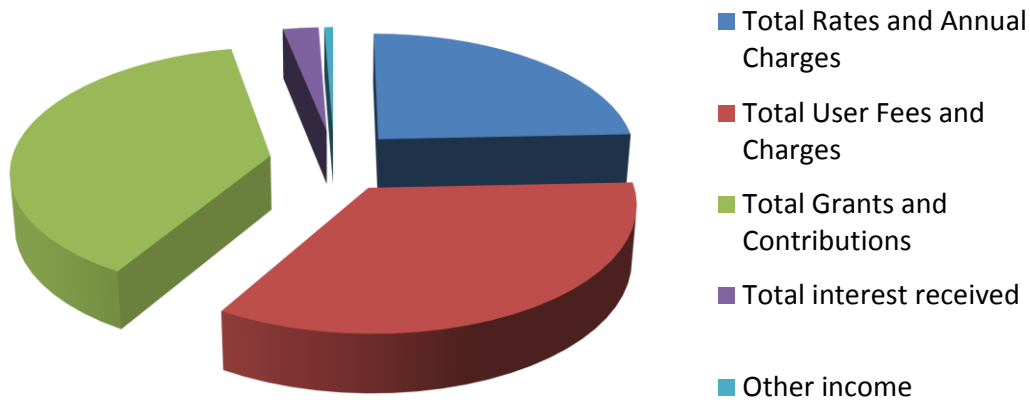


# King Island Council

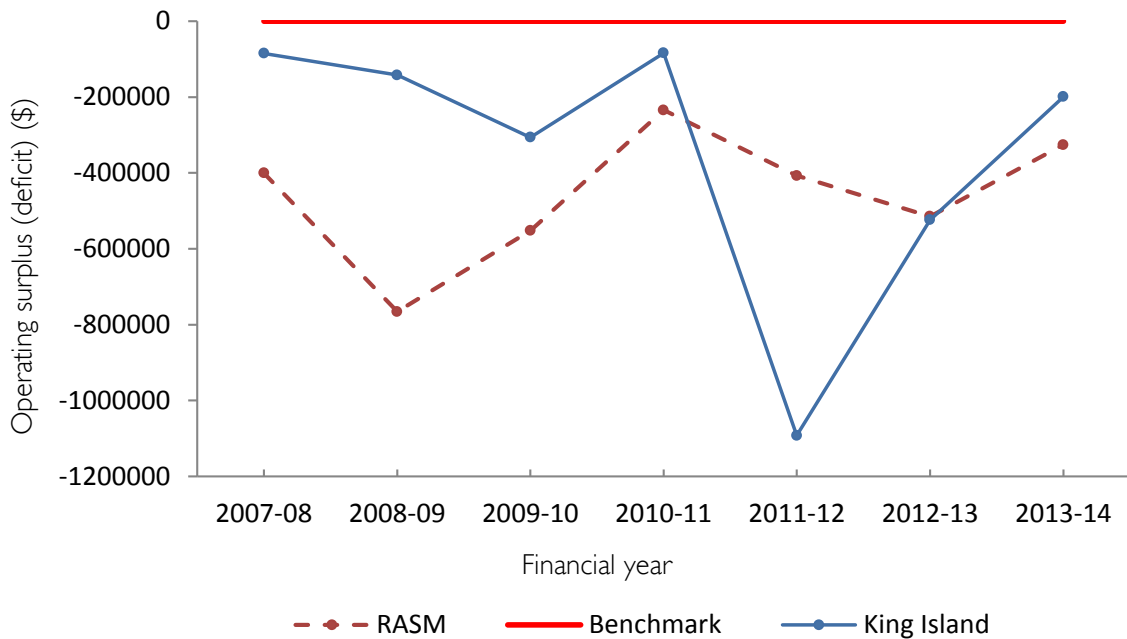
## REVENUE AND RATES

Indicator/Statistic (2012-13)	King Island	RASM Ave	State Ave	NSW RASM Ave
Total Revenue (\$'000s)	7,779	7,454	26,029	14,528
Own source revenue (%) <sup>4</sup>	58.5	60.6	65.9	43.0
Grants & contributions revenue (%)	38.3	34.8	28.8	50.2
Average rates/charges per Valuation	\$1188	\$1039	\$1322	\$1177
Average residential rate	\$750	\$734	\$1037	\$339

### Total Revenue



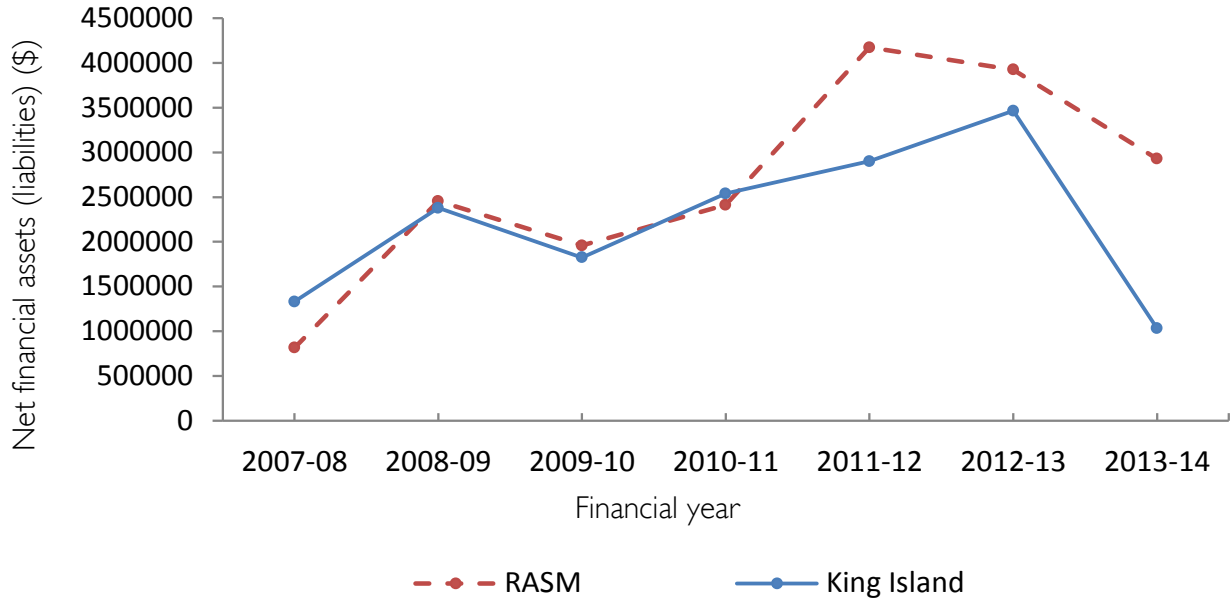
### Operating Surplus (Deficit)



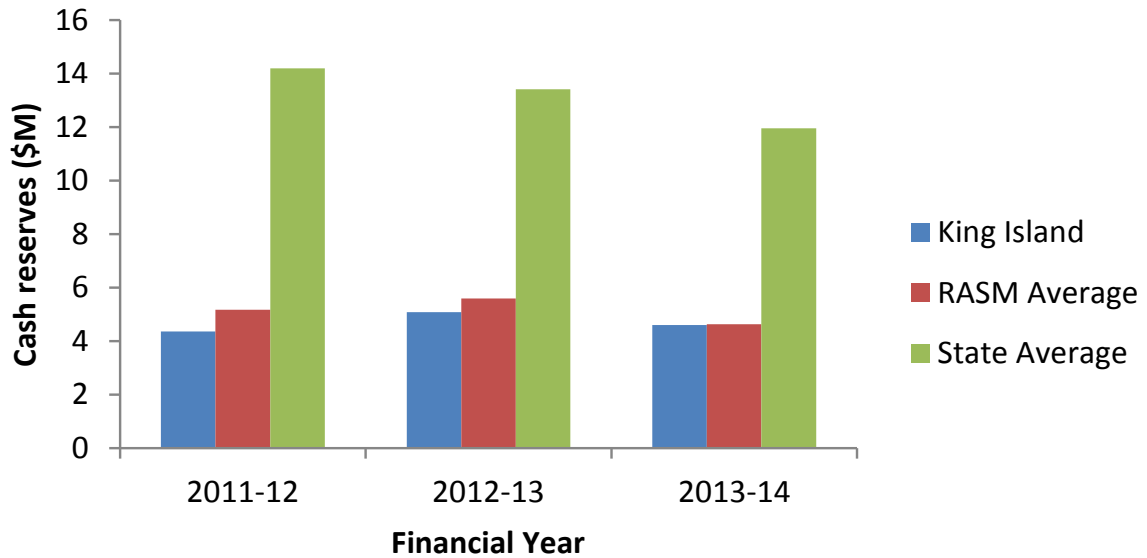
<sup>4</sup> Own source revenue and grants and contributions revenue are based on total revenue

# King Island Council

## Net Financial Assets (Liabilities)



## Cash Reserves



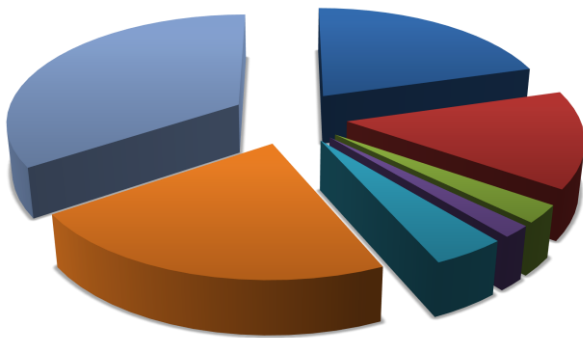
# King Island Council

## EXPENSES

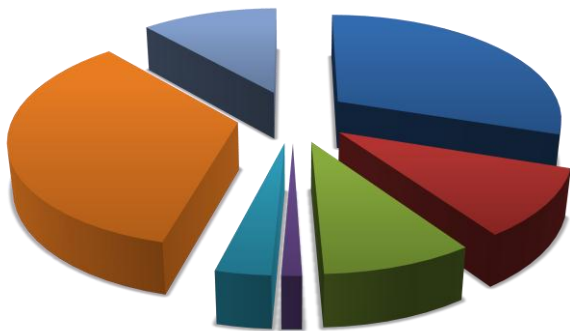
Indicator/Statistic (2012-13)	King Island	RASM Ave	State Ave	NSW RASM Ave
Total Expenditure (\$'000s)	7,876	7,532	25,166	13,478
Operating Cost per Valuation (\$)	4991	2955	2471	7174
Operating Expense per Capita (\$)	4925	3813	1756	4746

## Operating Expenses by Council Function

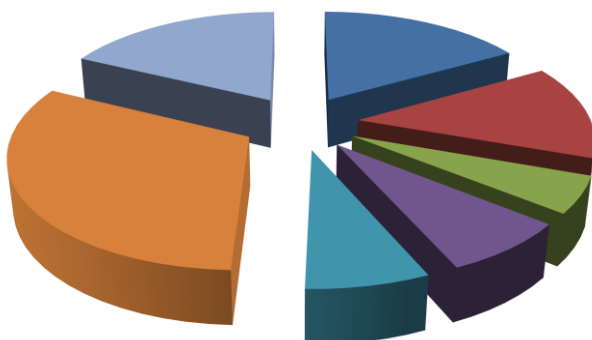
### King Island



### Tasmanian RASM Average



### NSW RASM Average



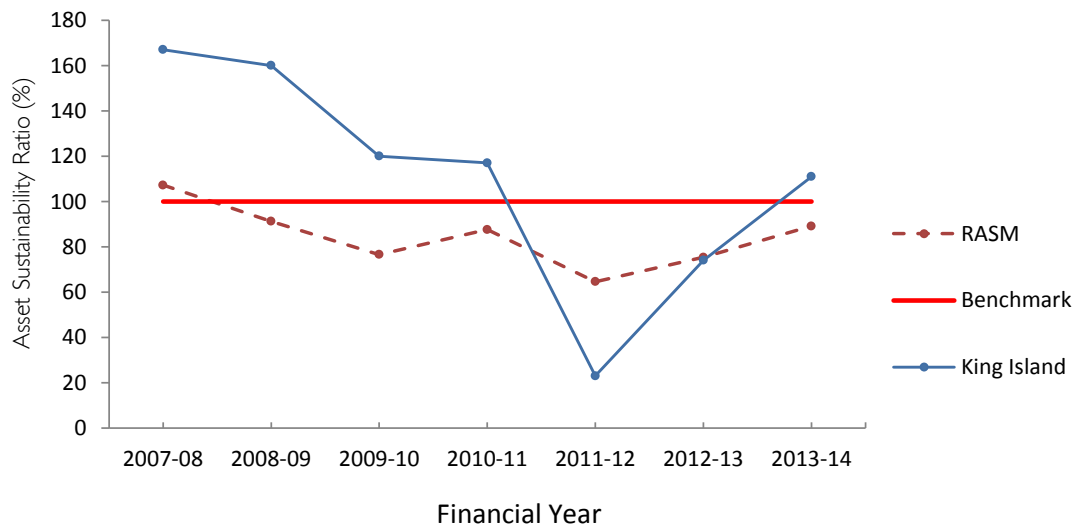
- Governance & Administration
- Public Order, Health & Safety
- Environmental
- Community Services, Education & Housing
- Recreational & Cultural
- Roads, Bridges & Footpaths
- Other Services

# King Island Council

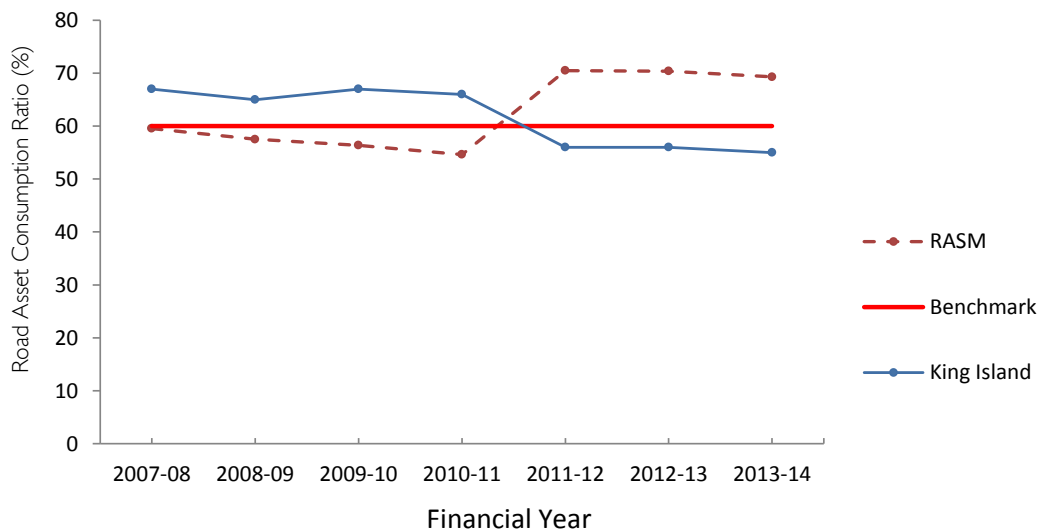
## ASSET MANAGEMENT

Indicator/Statistic (2012-13)	King Island	RASM Ave	State Ave
Non-current Assets (\$'000s)	65,691	87,081	297,287
Capital Expenditure (\$'000s)	1,407	1,906	7,658
Depreciation expenses (\$'000s)	1,910	1,911	5,300
Cap Ex to Depreciation ratio (%)	73.7	99.6	139.7

### Asset Sustainability Ratio



### Road Asset Consumption ratio



## GOVERNANCE AND HUMAN RESOURCE MANAGEMENT

Indicator/Statistic (2012-13)	King Island	RASM Ave	State Ave	NSW RASM Ave
No. Elected Members	9	8.6	9.69	8.25
Population Per Elected Members	178	264	1672	383
FTE's	34	32.8	118	66.2
FTE Staff per 1000 population	21.26	16.81	8.36	22.4
Employee costs to Operating Expense (%)	34	27.8	33.2	NA

# King Island Council

## APPENDIX A

	Rural Agricultural Small and Medium	Rural Agricultural Large	Rural Agricultural Very Large	Urban Small	Urban Medium
Abbreviation	RASM	RAL	RAV	US	UM
Definition	population of up to 5 000 at a density of <30 per km <sup>2</sup>	population of 5 000-10 000 at a density of <30 per km <sup>2</sup>	population of 10 000-20000 at a density of <30 per km <sup>2</sup>	population of up to 30 000	population of 30 000 – 70 000
Councils	Flinders Island King Island Central highlands Glamorgan-Spring Bay Tasman	Break O'Day Circular Head Dorset Southern Midlands Kentish Latrobe George Town West Coast	Derwent Valley Huon Valley Meander Valley Northern midlands Sorell Waratah-Wynyard	Brighton Burnie Devonport Central Coast West Tamar	Clarence Glenorchy Hobart Kingborough Launceston